



## SR 900

ИНСТРУКЦИИ ЗА УПОТРЕБА • NÁVOD K POUŽITÍ • BRUGSANVISNING  
GEBRAUCHSANLEITUNG • ΟΔΗΓΙΕΣ ΧΡΗΣΗΣ • INSTRUCTIONS FOR USE  
INSTRUCCIONES DE USO • KASUTUSJUHEND • KÄYTTÖOHJEET  
MODE D'EMPLOI • HASZNÁLATI UTASÍTÁS • ISTRUZIONI PER L'USO  
NAUDOJIMO INSTRUKCIJOS • LIETOŠANAS INSTRUKCIJAS  
GEBRUIKSAANWIJZING • BRUKERVEJLEDNING • РУКОВОДСТВО ПО  
ИСПОЛЬЗОВАНИЮ • INSTRUKJA UŻYTKOWANIA  
INSTRUÇÕES DE USO • NÁVOD NA POUŽITIE • NAVODILA  
ZA UPORABO • BRUGSANVISNING • KULLANIM TALİMATLARI

BG	Моля, прочетете и запазете тези инструкции.....	3
	Иллюстрации .....	116
CS	Prečtete si prosím a uschovejte tyto pokyny.....	8
	Obrázky .....	116
DA	Vær venlig at læse og opbevare .....	13
	Illustrationer .....	116
DE	Bitte lesen und aufbewahren .....	17
	Abbildungen .....	116
EL	Παρακαλούμε διαβάστε και φυλάξτε αυτές τις οδηγίες.....	22
	Εικονογραφήσεις .....	116
EN	Please read and save these instructions.....	27
	Illustrations .....	116
ES	Lea y conserve estas instrucciones por favor.....	31
	Ilustraciones.....	116
ET	Palun lugege ja salvestage see juhend. ....	36
	Joonised.....	116
FI	Leu ja pane talteen .....	40
	Kuvat .....	116
FR	Prière de lire et de conserver .....	44
	Figures .....	116
HU	Olvassa el és őrizze meg a használati utasítást.....	49
	Ábrák.....	116
IT	Leggere e conservare queste istruzioni.....	54
	Illustrazioni .....	116
LT	Prašome perskaityti ir išsaugoti šias instrukcijas.....	59
	Iliustracijos .....	116
LV	Lūdzu, izlasiet un saglabāiet šīs instrukcijas.....	64
	Attēli .....	116
NL	Lees en let goed op deze adviezen.....	69
	Illustraties.....	116
NO	Les og ta vare på disse veiledninger .....	74
	Bilder .....	116
PL	Prosimy przeczytać i zachować instrukcję.....	78
	Ilustracje .....	116
PT	Por favor leia e conserve em seu poder .....	83
	Figuras.....	116
RO	Vă rugăm să citiți și să păstrați aceste instrucțiuni.....	88
	ilustrații.....	116
RU	Пожалуйста, прочтите и храните это руководство.....	93
	Иллюстрации .....	116
SK	Prečítajte si prosím a uschovajte tieto pokyny.....	98
	Obrázky .....	116
SL	Prosimo, preberite in shranite ta navodila .....	103
	Ilustracije .....	116
SV	Läs och spara dessa instruktioner .....	107
	Illustrationer .....	116
TR	Lütfen bu talimatları okuyunuz ve saklayınız .....	111
	Resimler .....	116

# Half Mask SR 900

EN

1. General information
2. Parts
3. Use
4. Maintenance
5. Technical specification
6. Key to symbol
7. Approval

## 1. General information

Use of a respirator must be part of a respiratory protection program. For advice see EN 529:2005 or AS/NZS 1715:2009. The guidance contained in these standards highlights important aspects of a respiratory protective device program but does not replace national or local regulations.

If you feel uncertain about the selection and care of the equipment, consult your work supervisor or get in touch with the sales outlet. You are also welcome to get in touch with the Technical Service Department at Sundström Safety AB.

### 1.1 System description

The half mask SR 900 is used in combination with:

- Filters from the Sundström range.
- Remote filter holder SR 905 according EN 12083.
- The SR 307 or SR 507 compressed air attachment which then serves as a breathing apparatus with continuous flow for connection to a compressed air supply according EN 14594:2005.
- The fan unit SR 500/SR 700 and approved filters is included in the Sundström fan assisted respiratory protective device system conforming to EN 12942:1998.

### 1.2 Applications

The Sundström half masks provide respiratory protection against airborne pollutants, such as particles, micro-organisms, biochemical substances, gases/vapours and combinations of these substances to a user.

### 1.3 Warnings/Limitations

Note that there can be national differences in the regulations for use of respiratory protective equipment.

Do not use the equipment in environments:

- that are Immediately Dangerous to Life and Health (IDLH).
- where the ambient air is oxygen-enriched air or does not have a normal oxygen content.
- where the pollutants are unknown.

Do not use the equipment:

- if you cannot make the mask a tight fit during the fitting test. Note that beard growth, scars, or other physical characteristics may interfere with a proper fit of the respirator.
- if there is no warning information regarding pollutants.

Stop the work immediately:

- if you find that breathing is difficult.
- if you experience dizziness, nausea, or any other noticeable physical effect.
- if you smell or taste the pollutants.

Caution must be taken when using the equipment in explosive atmospheres.

## 2. Parts

### 2.1 Delivery check

Check that the equipment is complete in accordance with the packing list, and undamaged.

#### Packing list

Fig. 1.

1. Half mask
2. Pre-filter
3. Pre-filter holder
4. Cleaning tissue
5. ID-tag
6. User instructions
7. Storage bag

## 2.2 Mask

Fig. 3.

Item	Ordering. No.
Half mask SR 900 Small	H01-3012
Half mask SR 900 Medium	H01-3112
Half mask SR 900 Large	H01-3212
1. Mask body	-
2. Head harness, single strap	R01-3001
2. Head harness, cradle strap	R01-3002
3. Inhalation membrane	-
4. Valve seat	-
5. Exhalation membrane	-
6. Protective cap	-
7. Gasket	R01-3004
8. Filter holder	R01-3003
9. Gas filter	-
10. Particle filter	-
11. Pre-filter, SR221	H02-0312
12. Pre-filter holder	R01-0605

## 2.3 Filter

You can identify the filter type by the colour code on the filter. *See the User instructions for filters.* Note that a particle filter provides protection only against particles and a gas filter provides protection only against gases/vapours. A combined filter protects against both gases/vapours and particles.

Item	Ordering. No.
• Particle filter P3 R, SR 510	H02-1312
• Gas filter A1, SR 217	H02-2512
• Gas filter A2, SR 218	H02-2012
• Gas filter AX, SR 298	H02-2412
• Gas filter ABE1, SR 315	H02-3212
• Gas filter ABE2, SR 294	H02-3312
• Gas filter K1, SR 316	H02-4212
• Gas filter K2, SR 295	H02-4312
• Gas filter ABEK1, SR 297	H02-5312
• Combined filter ABEK1-Hg-P3 R, SR 299-2	H02-6512

## 2.4 Accessories / Spare parts

Item	Ordering. No.
• Membrane kit SR 369, fig. 4	R01-2004
Inhalation membrane 1x	
Exhalation membranes 2x	
Protective caps 2x	
• Service kit, fig. 5	R01-3005
Head harness, single strap	
Membrane kit SR 369	
Pre-filter holder	

- Protective hood SR 64, fig. 6 H09-0301
- Protective hood SR 345, fig. 7 H09-1012
- Protective hood SR 346, fig. 8 H09-1112
- Storage box SR 230, fig. 9 H09-3012
- Storage bag SR 339, fig. 10 H09-0112
- Hose SR 951, fig. 11 T01-3003
- Twin hose SR 952, fig. 12 R01-3009
- Voice amplifier SR 324, fig. 13 T01-1217
- Test adapter SR 328, fig. 14 T01-1202
- Steel net disc, fig. 15 T01-2001
- ID-tag, fig. 16 R09-0101
- Storage bag, 50x, fig. 17 R01-0607
- Cleaning tissues SR 5226, box of 50, fig. 18 H09-0401

### Compressed air attachment SR 307/SR 507

When the half mask is used with compressed air attachment SR 307/SR 507 the user instructions for the relevant equipment must be followed.

### Fan unit SR 500/SR 700

When the half mask is used with fan unit SR 500/SR 700 the user instructions for the relevant equipment must be followed.

### Remote filter holder SR 905

When the half mask is used with remote filter holder SR 905 the user instructions for the relevant equipment must be followed.

## 3. Use

### 3.1 Installation

#### Fasten ID-tag

Fig. 2.

1. Fold flap away before writing your name.
2. Seal the entry field.
3. Insert the label half-way in the slot.
4. Remove the protective paper.
5. Stick the label together.

#### Fit the filter in the mask

- Check that you have selected the correct filter. *See the User instructions for filters.*
- Check that the use-by date has not been passed. The use-by date is valid provided that the filter packaging is unopened.
- Fit the filter in the mask so that the arrows on the filter point towards the user's face. Fig. 19.
- Check that the edge of the filter is sealed by the filter holder all around and that the filter is in the internal groove of the filter holder all around. Fig. 20, 21.

- Fit the pre-filter in the pre-filter holder and press it into place on the filter. Fig. 22, 23.

When using both gas filter and particle filter, the particle filter shall always be snapped onto the gas filter and the gas filter shall always be inserted in the mask. Press the filters together with your fingers placed around the outer edges of the filters until you hear a click. Fig. 24.

### Separating filter

- Place a coin between the lower lip of the particle filter and the small tab moulded into the side of the gas filter.
- Push firmly and twist the coin until the filters separate. Fig. 25.

## 3.2 Inspection before use

- Check that the mask is complete, correctly assembled and thoroughly cleaned.
- Check the mask body, membranes, and membrane seats. Replace if worn, broken, or in other way defect. Fig. 26.
- Check that you have selected the right filter and it has been installed properly. Fig. 27.

## 3.3 Donning

- Remove any hood, glasses or ear protection from head.
- Put the mask on. Fig. 28, 29, 30.
- Take out any twists or tangles.
- Adjust the harness. Fig. 31.
- Wiggle the respirator until it fits comfortably.

### Fit check

- Put the mask on.
- Place the palm of your hand lightly over the hole on the pre-filter holder to make it tight. Fig. 32.
- Take a deep breath and hold your breath for about 10 s.

If the mask is tight, it will be pressed against your face.

*If any leakage is detected*

- *check the exhalation membranes, exhalation valves and the gasket,*
- *adjust the straps of head harness,*
- *switch to alternative size of the respirator.*

## 3.4 Doffing

Do not take off the mask until clear of the hazardous area.

- Take the mask off. Fig. 33.

## 4. Maintenance

### 4.1 Cleaning

- Remove the filter, the covers for the exhalation valves, the membranes, the inhalation membrane and the head harness. The harness can be washed, but takes extra time to dry. Fig. 34.
  - Clean the mask and all parts with Sundström cleaning tissues SR 5226.
  - If the mask is heavily soiled, use a warm (up to +40 °C), mild soap solution and a soft brush, followed by rinsing with clean water and drying in air at room temperature. Fig. 35.
  - If necessary, spray the mask with 70 % ethanol or isopropanol solution for disinfection.
  - Inspect all parts and replace with new parts as necessary. Critical areas are the exhalation membranes and the membrane seats which must have clean and undamaged contact surfaces.
  - Leave the mask to dry, and then assemble it.
- NOTE! Never use solvents for cleaning.

### 4.2 Storage

The best way to store the mask is in the provided storage bag, or Sundström storage box SR 230 or storage bag SR 339. Keep it away from direct sunlight or other sources of heat.

NOTE! A gas filter should be stored in a tightly sealed plastic bag.

### 4.3 Maintenance schedule

Recommended minimum requirements on maintenance routines so you will be certain the equipment will always be in usable condition.

	Before use	After use	Every year
Visual check	●		
Fit check	●		
Cleaning		●	
Change membrane			●
Change harness			●
Change gasket			●
Change filter	See User instructions for filters		

## 4.4 Change parts

Always use genuine Sundström parts. Do not modify the equipment. The use of non-genuine parts or modification of the equipment may reduce the protective function and put at risk the approvals received by the product.

### 4.4.1 To change the inhalation membrane

- Remove the membrane. Fig. 36.
- Fasten the new membrane on the pin.

### 4.4.2 To change the exhalation membrane

- Remove the protective cap and the membrane. Fig. 37.
- Press the new membrane onto the pin. Carefully check that the membrane is in contact with the membrane seat all round. Fig. 38.
- Press the new protective cap into place. Fig. 39.

### 4.4.3 To change the head harness

- Detach the head harness from the mask. Fig. 40.
- Attach the head harness to the mask. Fig. 41.

### 4.4.4 To change filter holder

- Detach the filter holder from the mask by turning it a ¼ of a lap. Fig. 42.
- Attach the new filter holder. Fig. 43. Make sure the gasket is mounted correctly on the filterholder, see fig. 45.

### 4.4.5 To change of gasket

- Detach the filter holder, see 4.4.4 Change filter holder.
- Release the gasket from the attachment on the filterholder. Fig. 44.
- Mount the new gasket. Fig. 45.
- Attach the filter holder, see fig 43.

## Materials

The material and pigments of the SR 900 mask body are approved for exposure to provisions, which minimizes the risk of contact allergies. All plastic parts are marked with material codes. Fig. 46 A.

## Shelf life

The shelf life for SR 900 is 5 years from the date of manufacture, see the date clocks. Fig. 46 B.

## Size and weight

Fig. 46 C.

## Temperature range

- Storing condition. Fig. 47.
- Using conditions. Fig. 48.

## 6. Key to symbol



See user instructions



Date clocks, year and month



CE approved by  
INSPEC Certification Ltd



Relative humidity



Temperature range



Material designation

## 7. Approval

The half mask SR 900 is approved in accordance with EN 140:1998.

The PPE Regulation (EU) 2016/425 type approval has been issued by Notified Body 0194. For the address, see the reverse side of the user instructions.

The EU declaration of conformity is available at [www.srsafety.com](http://www.srsafety.com)

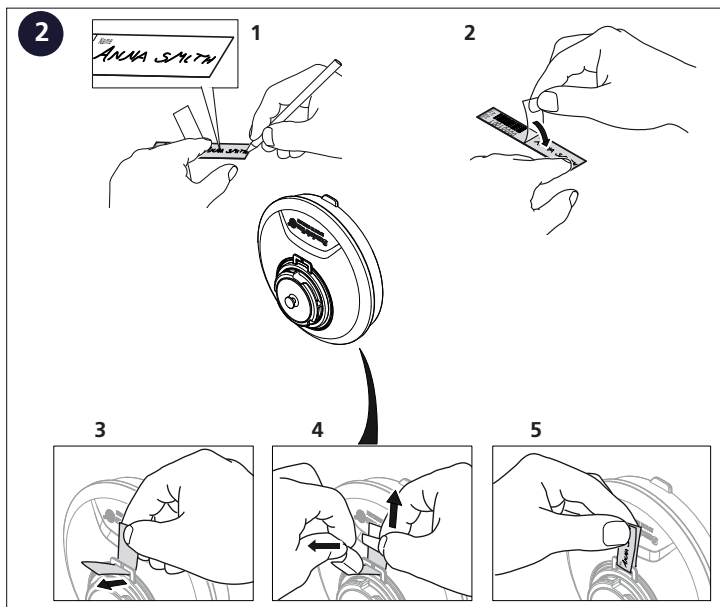
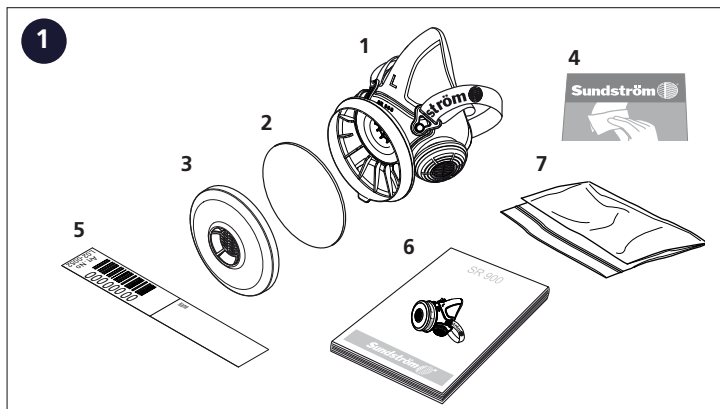
## Australian StandardsMark

The half mask SR 900 is tested and certified to AS/NZS 1716:2012. The StandardsMark is issued under licence by SAI Global Pty Limited Lic No. 766 (ACN 108 716 669) ("SAI Global").

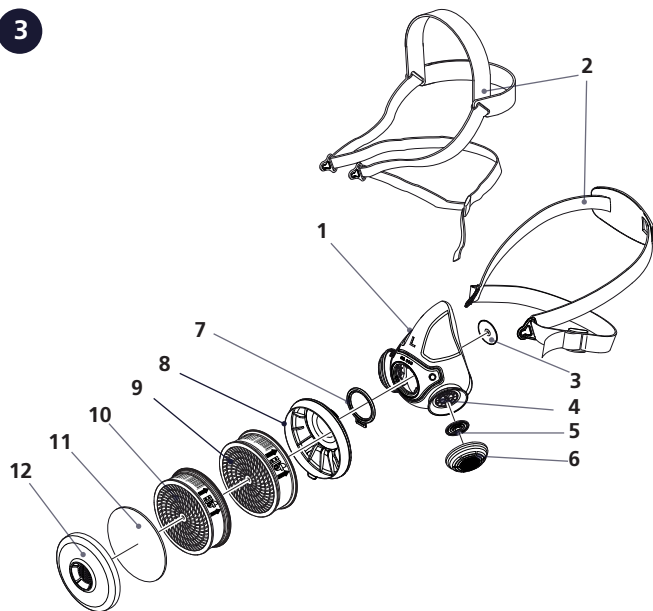
## 5. Technical specification

**Inhalation resistance with particle filter**  
≈ 40 Pa at 30 l/min.

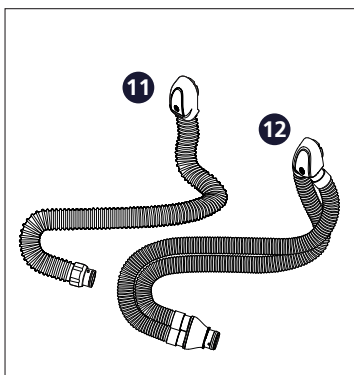
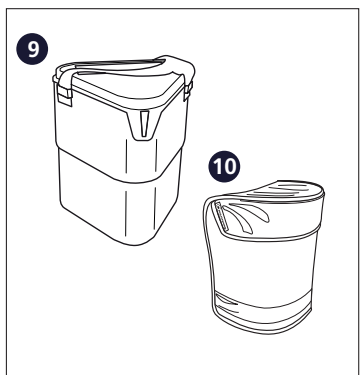
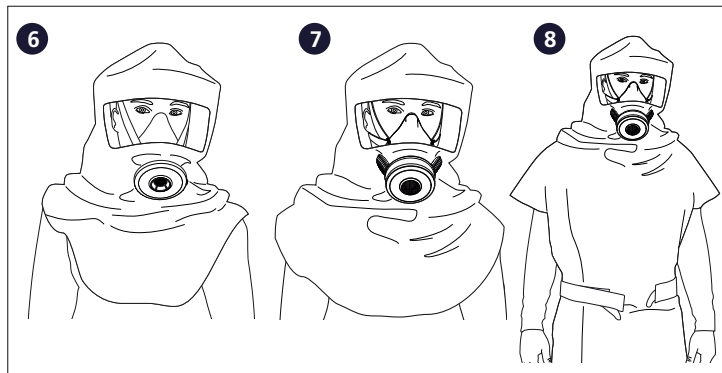
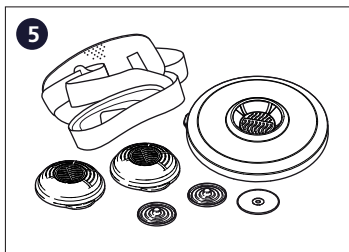
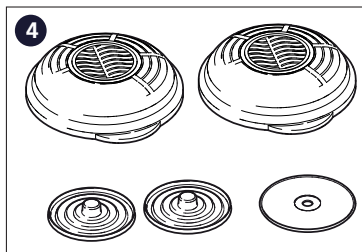
**Exhalation resistance**  
≈ 73 Pa at 160 l/min.



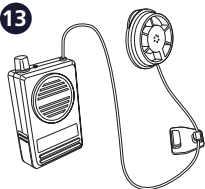
3



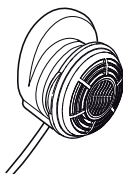




13



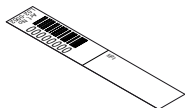
14



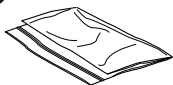
15



16

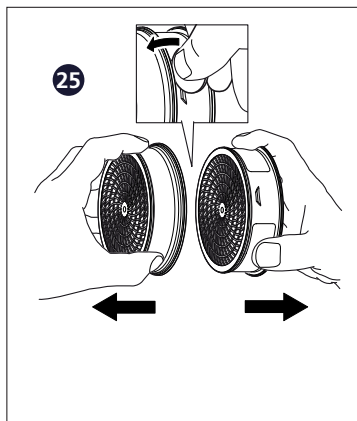
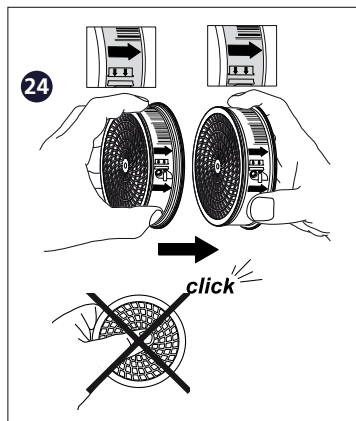
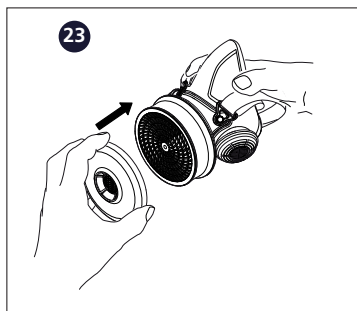
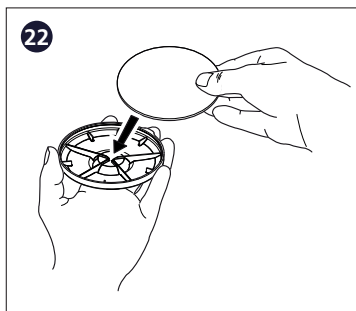
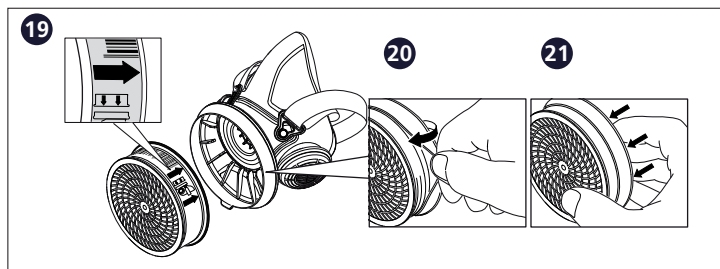


17

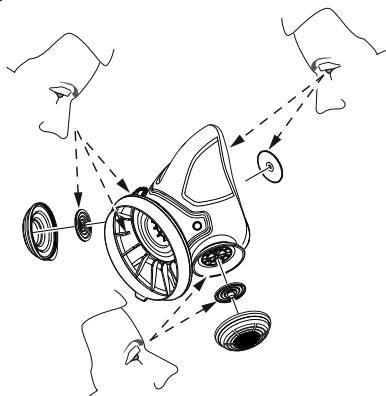


18

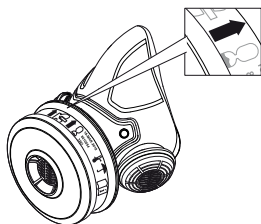




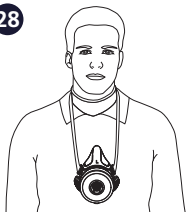
26



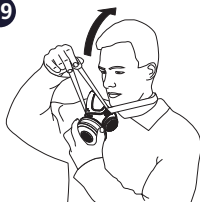
27



28



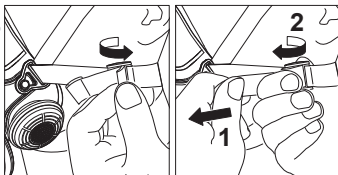
29



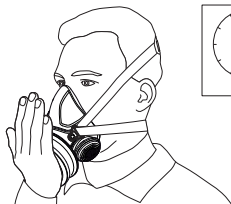
30

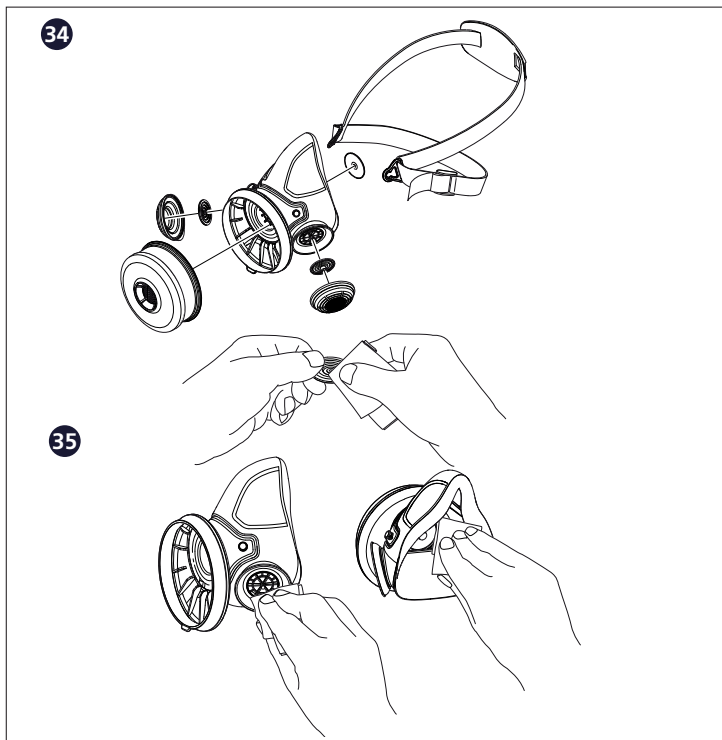


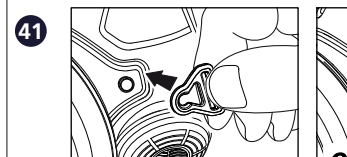
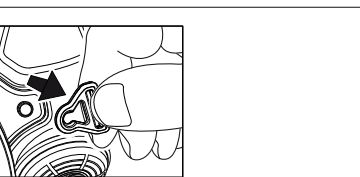
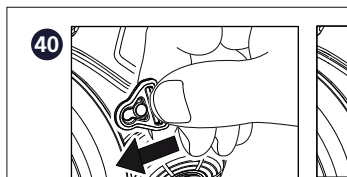
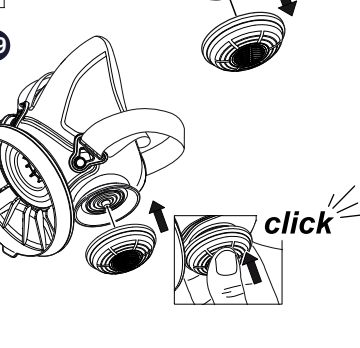
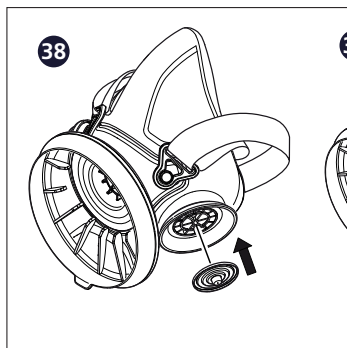
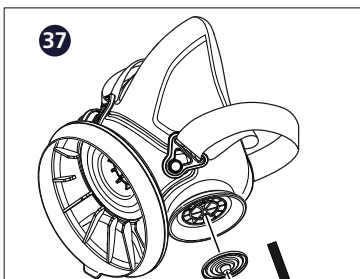
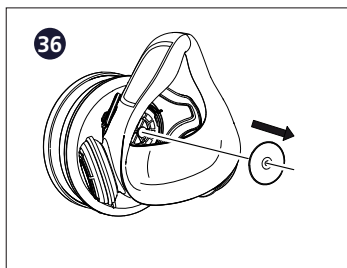
31



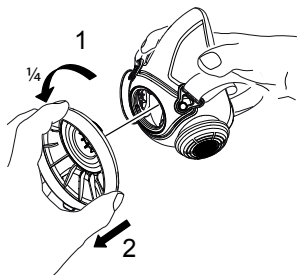
32



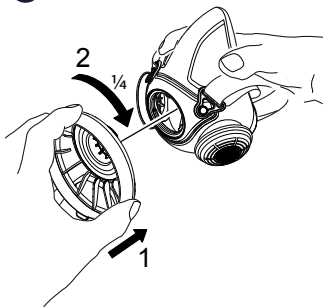




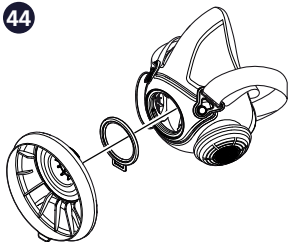
42



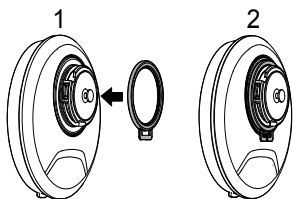
43



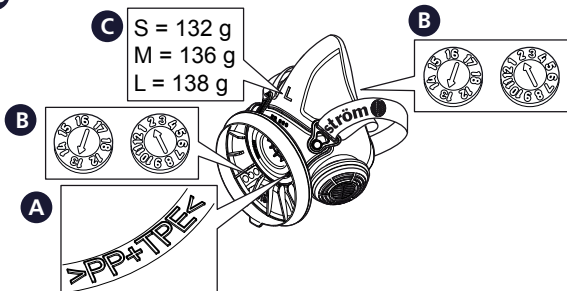
44



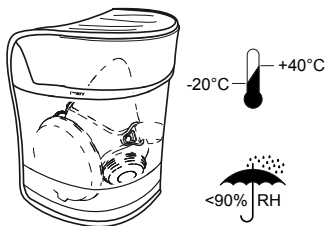
45



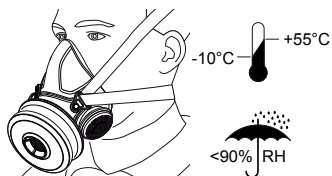
46



47



48









# Fit Check Record

Date	Result	Sign	Date	Result	Sign

# Fit Check Record

Date	Result	Sign	Date	Result	Sign

[illegible]



The half masks SR 900 are manufactured within a quality management system accepted by  
Notified Body 0194: INSPEC International Ltd,  
Certification Services, 56 Leslie Hough Way,  
Salford, M6 6AJ, England.



**Sundström Safety AB**

SE-341 50 Lagan • Sweden

Tel: +46 10 484 87 00

info@srsafety.se • [www.srsafety.com](http://www.srsafety.com)